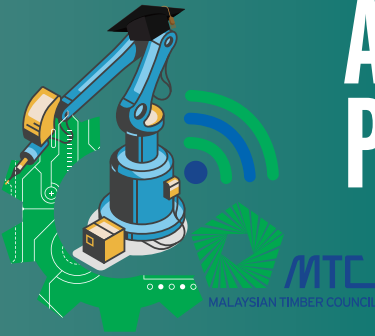


MTC ENGINEER PLACEMENT AND INTERNSHIP IN INDUSTRY PROGRAMME 2022



The need to accelerate growth, improve productivity and retain a competitive edge is crucial for all industries and the timber sector is no exception. Hence, it is crucial for the industry to increase the pool of knowledge talent, especially on engineering and manufacturing process to strengthen the industry's capabilities in achieving higher productivity.

In view of the above, MTC is introducing its Engineer Placement and Internship in Industry Programme to assist wood-based companies secure the right pool of talent as well as help engineering undergraduates who are keen on being part of the timber industry. MTC will subsidise the intern allowance for companies that participate in this programme.



There are two parts to this programme;

1. Engineer Placement

- The 9 months placement programme will enable graduates to receive on-the-job training under the guidance of a professional mentor.
- MTC will absorb the training cost and if the candidate is deemed fit, he/she will be absorbed as a permanent staff.
- Companies participating in the programme will enjoy incentives, e.g. subsidised allowance.

2. Internship Placement

- The Internship programme is open to undergraduates who are doing their industrial training.
- The programme will take a maximum of 6 months to complete (subject to the respective university or institution's course requirement).
- Companies participating in the programme are eligible for incentives, e.g. subsidised allowance.

To register for the programme, kindly scan the QR code.



MINISTRY OF PLANTATION
INDUSTRIES AND COMMODITIES



21st Floor, Menara PGRM, 8, Jalan Pudu Ulu, 56100 Cheras, Kuala Lumpur
Tel: 03-9281 1999 Fax: 03-9282 8999 Website: www.mtc.com.my

For further enquiries and information, please contact the following:

1. Ts. Nasrul Izan Shahrin, email: nasrul@mtc.com.my
2. Ms. Adeline Goh, email: adeline@mtc.com.my